



Focal Persons Brochure

African Partners



A vibrant multidisciplinary African Academy able to lead world-class research that makes a positive impact on public and population health.

vision

mission

To create and sustain African research-intensive universities that prioritize maintenance of a pipeline of high-quality multidisciplinary early career researchers (ECRs) in public and population health in the SSA region.

ABOUT CARTA

The Consortium for Advanced Research Training in Africa (CARTA) was established in 2008 as an Africa-based, African-led initiative to rebuild and strengthen the capacity of universities in Africa to produce well-trained and skilled researchers and scholars. It is a consortium of African-partner universities, research institutions, and Non-African partner institutions. It is jointly led by the African Population and Health Research Center (APHRC), Kenya, and the University of the Witwatersrand (Wits), South Africa.

OUR APPROACH

Our overarching goals are:

- Capacity Strengthening - Enhance the capacity of African universities to lead globally competitive research and training programs.
- Build strong research body - Build vibrant, viable, sustainable multidisciplinary research hubs at Africa-based universities.
- Networks - Create networks of locally-trained internationally recognized scholars

The CARTA program has evolved over the last 15 years of its implementation with each five-year cycle addressing pertinent issues for building research capacity at the partner institutions whilst taking into consideration the stage of maturity of the program and the lessons learnt from the implementation. The first phase of the program (2011-2015) had two main components:

- Strengthening doctoral training through the creation of a collaborative doctoral training program in public and population health;
- Strengthening research infrastructure and capacity at African universities.



The second phase (2016 – 2020) built on the successes of the preceding phase and had three interlinked components:

- Sustaining the production of a critical mass of well-trained African academics at doctoral level;
- Institutionalization of CARTA interventions at the African partner universities.
- Securing the future of CARTA graduates through the provision of postdoctoral opportunities.

In the third phase (2021-2025) - dubbed CARTA2025 - the program builds on the successes of the first two phases and has four interlinked strategic thrusts, which are:

1. High Quality Early Career Researchers (ECRs)

CARTA2025 aims to maintain a pipeline of ECRs by:

- Providing doctoral and postdoctoral fellowships; Running Joint
- Advanced Seminars (JASes) to equip doctoral fellows with transferable research skills; and Providing training to nudge ECRs into research
- leadership .

2. Research Hubs

CARTA2025 aims to create multi-disciplinary, cross-institutional research hubs in partner universities by:

Competitively selecting host institutions; Providing support for the establishment of research teams that incorporate ECRs; and Facilitating the research hubs to co-design research agenda and to develop large-scale competitive grant proposals, embedding PhD and postdoctoral training.

3. Mainstreaming of CARTA Interventions

CARTA2025 supports the creation of research supportive environments in African partner institutions by:

- Enhancing supervisors' understanding of and commitment to the goals of doctoral supervision, exposing them to best practices in doctoral supervision and mentorship - through Supervisors Workshops;

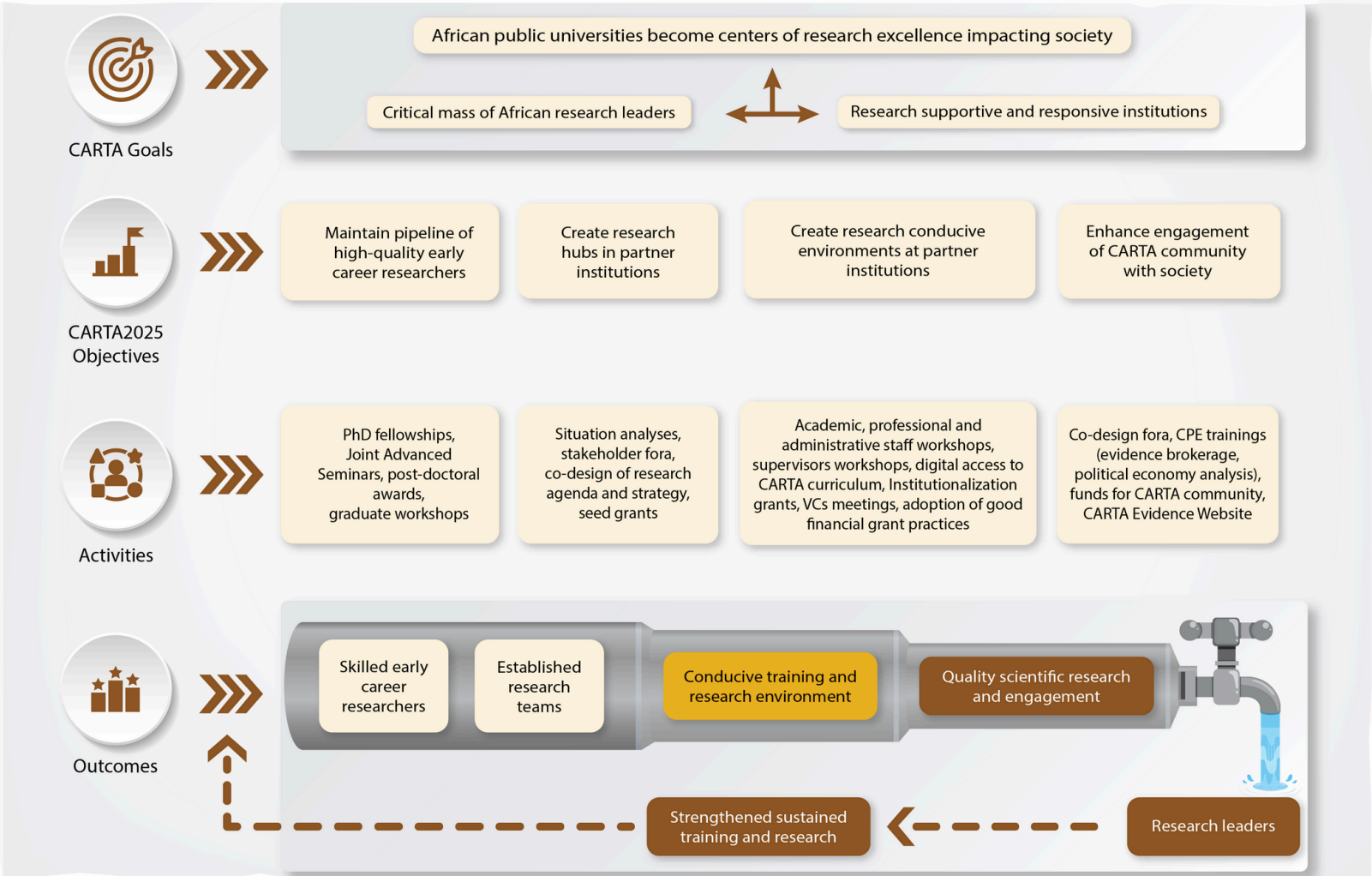
- Enhancing critical staff members’ understanding of their critical roles in supporting postgraduate students, while also keeping them abreast with best practices in their functionary areas - through the Faculty and Administrative Staff (FAS) seminars;
- Supporting partner institutions to independently run existing CARTA interventions - through Mainstreaming projects.

4. Engagement of CARTA Community with Society

CARTA2025 aims to enhance the engagement of the CARTA community with society by:

- Facilitating partnerships between research hubs and policy actors through co-design of research;
- Strengthening CARTA ECR’s competencies in science communication, policy engagement and knowledge translation.
- Supporting the uptake of research products from ECRs through publications, conferences, and different forms of media.

CARTA 2025 THEORY OF CHANGE





Central to the CARTA2025 ToC is:

- A critical mass of well-trained and motivated researchers, supported by a conducive environment.
- Institutional change agents who will train the next generation of African research leaders and engineer a shift towards research-supportive academic environments.

ORGANIZATION OF CARTA

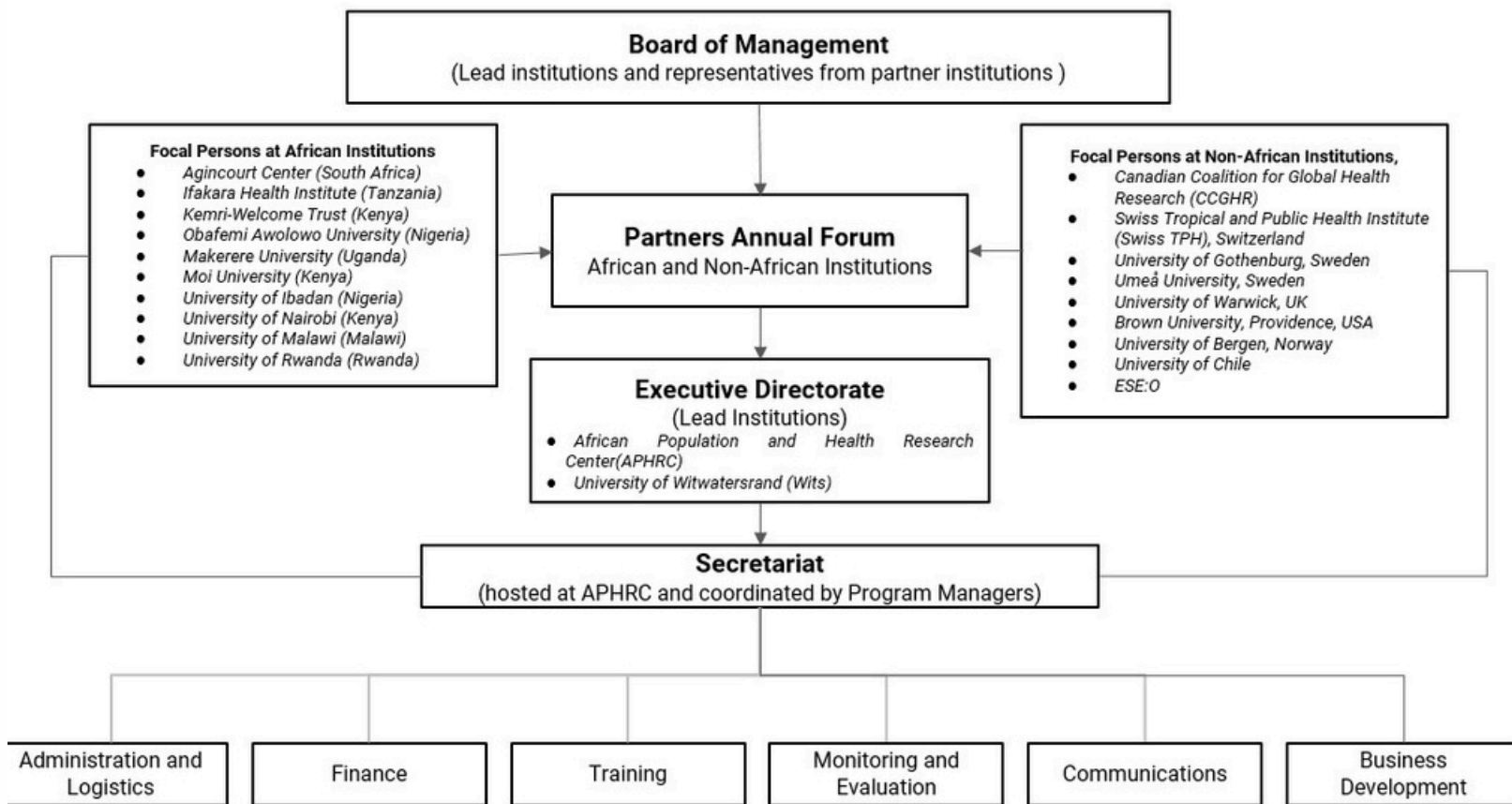
CARTA is managed through a Secretariat, which is hosted at the APHRC. The Secretariat comprises program managers and administrative, training, monitoring and evaluation, finance, communication and development officers. The Secretariat collaborates with institutionally appointed focal persons from Africa-based partner institutions in order to ensure that CARTA strategies and activities are well coordinated, monitored and evaluated. The Secretariat also coordinates the participation of non-Africa-based partners in the program.

The Secretariat is directed by an Executive Directorate (ED), which has the overall responsibility for the day-to-day management, decision-making, and communication to partners and networks. CARTA holds an annual forum of all its partner institutions and funders in order to:

- Present its status, progress, achievements and challenges;
- Present financial reports; Communicate specific information of importance to the partnership;
- Deliberate on, adopt and recommend directions and strategies for CARTA.
- Deliberate on fundraising endeavors and future plans.

All strategies, initiatives and products are communicated to the partners by the Executive Directorate. The Board of Management (BoM), which is the highest decision-making body of CARTA provides oversight to the Executive Directorate, considering for approval recommendations made by the Executive Directorate.

CARTA's Organogram



CONTRIBUTION OF AFRICAN-BASED PARTNER INSTITUTIONS

African-based partners contribute towards the Consortium in several ways including:

- Promotion and visibility of the CARTA Program
- Management of CARTA activities at the institutional level.
- Development and facilitation of research training and related programs
- Nomination, review, and selection of potential CARTA doctoral fellows, graduates to take up the various CARTA opportunities, and participants and facilitators for other CARTA workshops.
- Provision of doctoral training and research capacity building opportunities to CARTA fellows
- Recognition and facilitation of CARTA fellows academic and research excellence and career development.
- Full participation in CARTA Partner Forums.
- Mainstreaming of CARTA innovations.

- Provision of tuition waivers to staff members enrolled for doctoral degree programs in the institution.
- Creation and hosting of CARTA research hubs.
- Provision of expertise to support CARTA research capacity strengthening activities.
- Participation in CARTA Scientific Advisory Committees.

Roles of Focal Persons

CARTA activities in the African partner institutions are coordinated through the focal persons whose roles in the four strategic thrusts would include:

1. High quality Early Career Researchers (ECRs)

- Sensitization of university fraternity on CARTA opportunities for doctoral fellowships, Nomination and selection of doctoral fellows.
- Convening of annual meetings with CARTA fellows to discuss issues related to their progress in the fellowship.
- Provision of support to CARTA fellows within their institution, either employed or registered for studies, to have a conducive environment that would maximize their potential as doctoral and post-doctoral fellows.
- Monitoring of fellows' progress. Recommendation of CARTA fellows and graduates for leadership (research) considerations.
- Utilization of CARTA fellows in the development of curriculum facilitation and organization of workshops and other CARTA events, such as development of grant proposals
- Advising of CARTA fellows on post-doctoral opportunities
- Liaison with CARTA Secretariat on doctoral and post-doctoral fellowships and CARTA graduates.



2. CARTA Research hubs

- Coordination of the process of developing proposals for consideration of CARTA research hubs in institutions.
- Identification of appropriate experts to serve in the Scientific Advisory Boards (SABs) of CARTA research hubs.
- Monitoring of progress in CARTA research hubs.
- Liaison with CARTA Secretariat on CARTA research hub activities.

3. Mainstreaming of CARTA Interventions

- Increasing visibility of CARTA at the institutional level.
- Dissemination of information on the CARTA Program within the institution, including information on fellowship, facilitation, capacity strengthening, and funding opportunities.
- Identification and facilitation of engagement of experts in CARTA initiatives, both at institutional and Consortium levels.
- Preparation of proposals for institutionalization and infrastructural support.
- Monitoring of progress on institutional and infrastructural endeavors.
- Coordination of hosted activities, in collaboration with the CARTA Secretariat (Joint Advanced Seminars (JASes), Faculty and Administrative Staff (FAS) Workshops.
- Timely reporting of progress and accounting of funds.
- Liaison with CARTA Secretariat on mainstreaming of CARTA interventions.

4. Community and Policy Engagement (CPE)

- Coordination of the process of developing proposals for grants for CPE activities.
- Coordination of CARTA institutional-based CPE activities and training
- Monitoring of progress on the CARTA institutional-based CPE activities.
- Liaison with the Secretariat on the CARTA institutional-based CPE activities.

CURRENT FOCAL PERSONS

University of Rwanda



Prof. François Niragire
College of Business and Economics

Tel: +250 788 273787
Email: fniragire@gmail.com



Dr. Mousa Hakizamana
College of Medicine and Health Sciences

Email: hakizamoise@gmail.com

Kamuzu University of Health Sciences, Malawi



Prof. Fanuel Lampiao
College of Medicine

Tel: +265 881992652
Email: flampiao@kuhes.ac.mw



Prof. Adamson S. Muula
College of Medicine

Tel: +265 884 233 486
Email: amuula@kuhes.ac.mw

University of Ibadan, Nigeria



Prof. Akinyinka Omigbodun
College of Medicine

Tel: +234 803 323 0457
Email: omigbodun@yahoo.com



Prof. Olufunke A Fayehun
Department of Sociology

Tel: +2348025782907
Email: cl_funke@yahoo.com

Makerere University, Uganda



Prof. Robert Wamala
Directorate of Research

Tel: +256 783573395
Email: wamalar@gmail.com



Dr. John Bosco Isunju
Disease Control & Environmental Health Dept

Tel: +256-772346304
Email: isunju@musph.ac.ug

Moi University, Kenya



Prof. Christopher Odhiambo

Director, School of Postgraduate Studies

Tel: +254 722 345953

Email: cjodhiambo@hotmail.com



Amb. Prof. Anne Nangulu

Ambassador, Kenya Embassy, Dakar, Senegal

Tel: +254 733 870 502

Email: anangulu@gmail.com

Obafemi Awolowo University, Nigeria



Dr. Melvin Ojo Agunbiade

Senior Lecturer, Department of Sociology and Anthropology

Tel: +234 805 922 1715

Email:

oagunbiade@oauife.edu.ng



Dr. Oluwaseun Taiwo Esan

Senior Lecturer, Department of Community Health

Email: seunkayo@yahoo.com

University of Witwatersrand, South Africa



Prof. Jude Igumbor

Senior Lecturer, School of Public Health

Tel: +27 72 791 59 27

Email: Jude.Igumbor@wits.ac.za



Dr. Daphney Conco

Senior Lecturer, Health and Society Division

Tel: +27 11 717 2502

Email:

Daphney.Conco@wits.ac.za

University of Nairobi, Kenya



Dr. Rose Opiyo

Chairperson, Department of Public and Global Health

Tel: +254 722 473122

Email: roseopiyo@uonbi.ac.ke



Prof. Alfred Agwanda

Director, Population Studies & Research Institute

Tel: +254 714 850803

Email: ataotieno@uonbi.ac.ke

**Ifakara Health Institute,
Tanzania**

**KEMRI-Wellcome Trust
Programme**



Dr. Dickson Wilson Lwetoijera

Principal Research Scientist

Email: dwilson@ihi.or.tz



Amb. Prof. Anne Nangulu

Head of Training

Email: SKmuchina@kilifi.kemri-wellcome.org |
skmuchina@gmail.com

African Population and Health Research Center (APHRC)



Dr. Engelbert Luchuo

Head of International Programs

Email: eluchuo@aphrc.org



Dr. Beatrice Maina

Associate Research Scientist

Tel: +254 722 205 933
Email: bmaina@aphrc.org

Agincourt MRC, South Africa



Francesc Xavier Gómez-Olivé Casas

Head of Field Research

MRC/Wits Rural Public Health
and Health Transitions Research
Unit, School of Public Health

Email: OliveCasas@wits.ac.za