



Focal Persons Brochure

Non-African Partners
Institutions



A vibrant multidisciplinary African Academy able to lead world-class research that makes a positive impact on public and population health.

vision

mission

To create and sustain African research-intensive universities that prioritize maintenance of a pipeline of high-quality multidisciplinary early career researchers (ECRs) in public and population health in the SSA region.

ABOUT CARTA

The Consortium for Advanced Research Training in Africa (CARTA) was established in 2008 as an Africa-based, African-led initiative to rebuild and strengthen the capacity of universities in Africa to produce well-trained and skilled researchers and scholars. It is a consortium of African-partner universities, research institutions, and Non-African partner institutions. It is jointly led by the African Population and Health Research Center (APHRC), Kenya, and the University of the Witwatersrand (Wits), South Africa.

OUR APPROACH

Our overarching goals are:

- Capacity Strengthening - Enhance the capacity of African universities to lead globally competitive research and training programs.
- Build strong research body - Build vibrant, viable, sustainable multidisciplinary research hubs at Africa-based universities.
- Networks - Create networks of locally-trained internationally recognized scholars

The CARTA program has evolved over the last 15 years of its implementation with each five-year cycle addressing pertinent issues for building research capacity at the partner institutions whilst taking into consideration the stage of maturity of the program and the lessons learnt from the implementation. The first phase of the program (2011-2015) had two main components:

- Strengthening doctoral training through the creation of a collaborative doctoral training program in public and population health;
- Strengthening research infrastructure and capacity at African universities.



The second phase (2016 – 2020) built on the successes of the preceding phase and had three interlinked components:

- Sustaining the production of a critical mass of well-trained African academics at doctoral level;
- Institutionalization of CARTA interventions at the African partner universities.
- Securing the future of CARTA graduates through the provision of postdoctoral opportunities.

In the third phase (2021-2025) - dubbed CARTA2025 - the program builds on the successes of the first two phases and has four interlinked strategic thrusts, which are:

1. High Quality Early Career Researchers (ECRs)

CARTA2025 aims to maintain a pipeline of ECRs by:

- Providing doctoral and postdoctoral fellowships; Running Joint
- Advanced Seminars (JASes) to equip doctoral fellows with transferable research skills; and Providing training to nudge ECRs into research
- leadership .

2. Research Hubs

CARTA2025 aims to create multi-disciplinary, cross-institutional research hubs in partner universities by:

Competitively selecting host institutions; Providing support for the establishment of research teams that incorporate ECRs; and Facilitating the research hubs to co-design research agenda and to develop large-scale competitive grant proposals, embedding PhD and postdoctoral training.

3. Mainstreaming of CARTA Interventions

CARTA2025 supports the creation of research supportive environments in African partner institutions by:

- Enhancing supervisors' understanding of and commitment to the goals of doctoral supervision, exposing them to best practices in doctoral supervision and mentorship - through Supervisors Workshops;

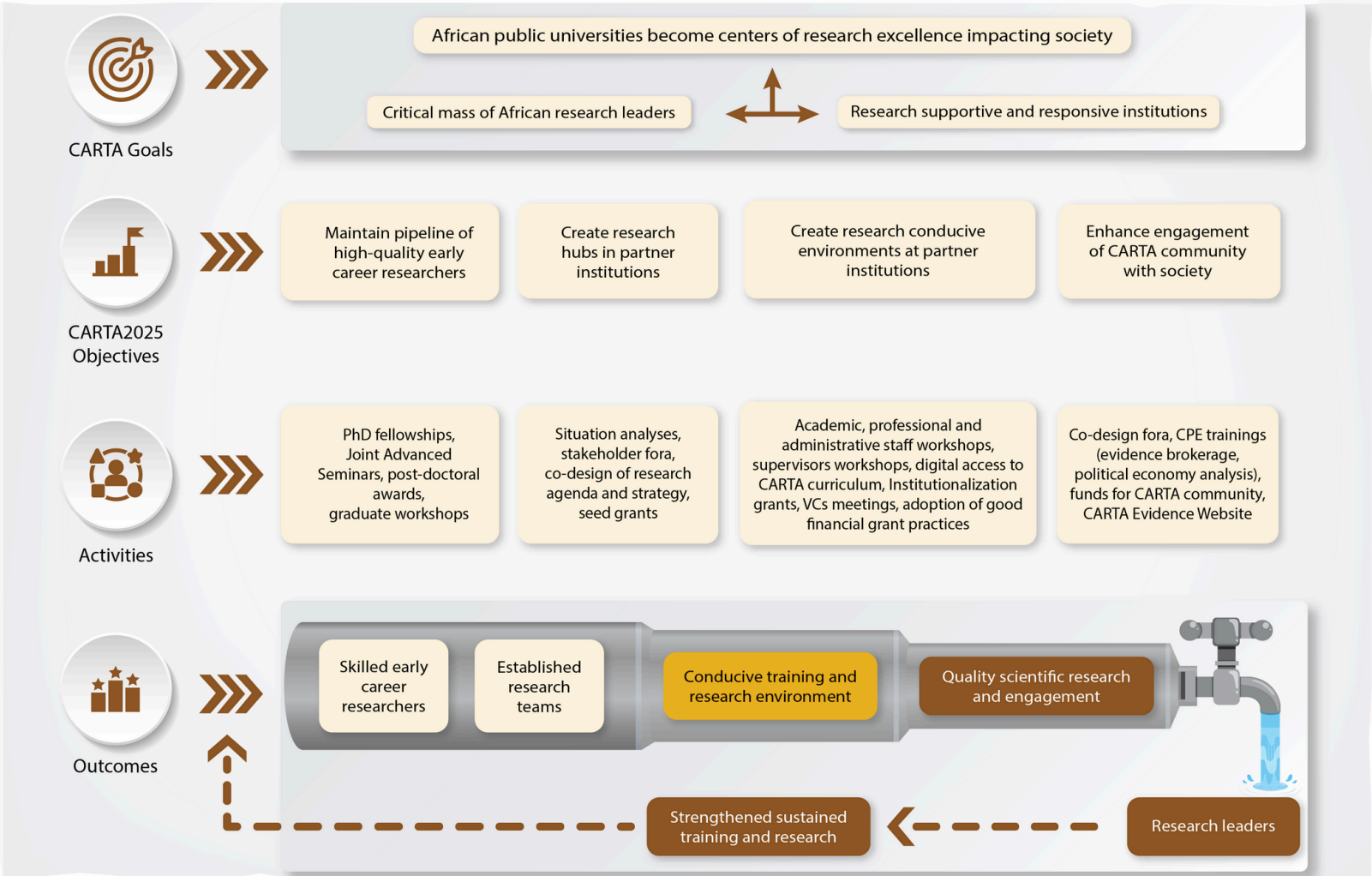
- Enhancing critical staff members’ understanding of their critical roles in supporting postgraduate students, while also keeping them abreast with best practices in their functionary areas - through the Faculty and Administrative Staff (FAS) seminars;
- Supporting partner institutions to independently run existing CARTA interventions - through Mainstreaming projects.

4. Engagement of CARTA Community with Society

CARTA2025 aims to enhance the engagement of the CARTA community with society by:

- Facilitating partnerships between research hubs and policy actors through co-design of research;
- Strengthening CARTA ECR’s competencies in science communication, policy engagement and knowledge translation.
- Supporting the uptake of research products from ECRs through publications, conferences, and different forms of media.

CARTA 2025 THEORY OF CHANGE





Central to the CARTA2025 ToC is:

- A critical mass of well-trained and motivated researchers, supported by a conducive environment.
- Institutional change agents who will train the next generation of African research leaders and engineer a shift towards research-supportive academic environments.

ORGANIZATION OF CARTA

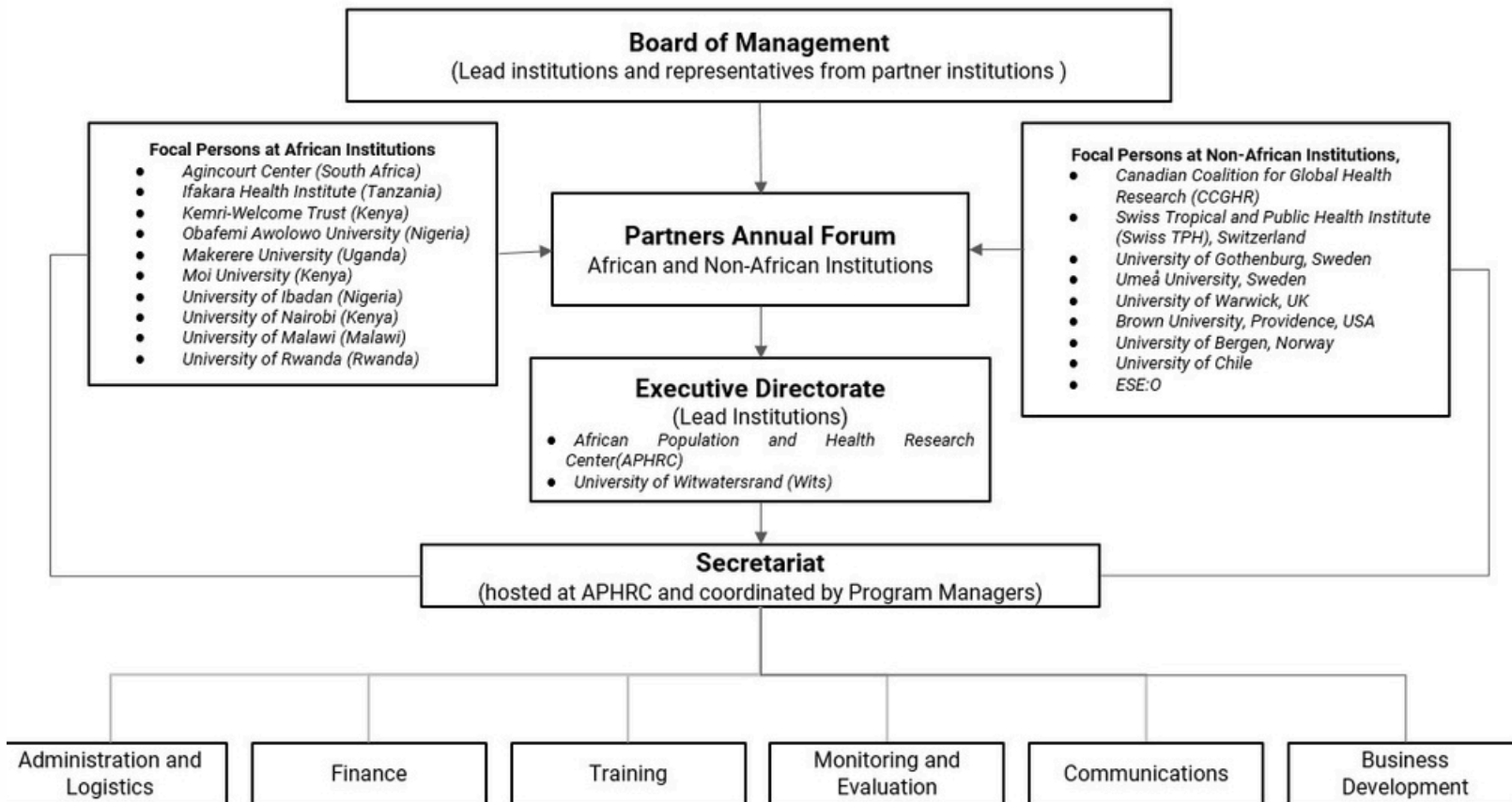
CARTA is managed through a Secretariat, which is hosted at the APHRC. The Secretariat comprises program managers and administrative, training, monitoring and evaluation, finance, communication and development officers. The Secretariat collaborates with institutionally appointed focal persons from Africa-based partner institutions in order to ensure that CARTA strategies and activities are well coordinated, monitored and evaluated. The Secretariat also coordinates the participation of non-Africa-based partners in the program.

The Secretariat is directed by an Executive Directorate (ED), which has the overall responsibility for the day-to-day management, decision-making, and communication to partners and networks. CARTA holds an annual forum of all its partner institutions and funders in order to:

- Present its status, progress, achievements and challenges;
- Present financial reports; Communicate specific information of importance to the partnership;
- Deliberate on, adopt and recommend directions and strategies for CARTA.
- Deliberate on fundraising endeavors and future plans.

All strategies, initiatives and products are communicated to the partners by the Executive Directorate. The Board of Management (BoM), which is the highest decision-making body of CARTA provides oversight to the Executive Directorate, considering for approval recommendations made by the Executive Directorate.

CARTA's Organogram



CONTRIBUTIONS OF NON-AFRICAN PARTNER INSTITUTIONS

Support CARTA fellows and graduates by identifying and providing:

- Advisors and mentors
- Research
- Placements/internships
- Research training courses
- Teacher replacements
- Post-doc placements
- Career development
- Networking opportunities
- Facilitation of CARTA training events
- Review of CARTA fellows' and graduates' assignments and proposals
- Review of applications for CARTA awards
- Proposal development
- Development of research training

BENEFITS OF BEING A FOCAL PERSON

CARTA activities in the Non-African partner institutions are supported through focal persons whose roles are harmonized through a designated Coordinator.

The focal persons and partner institutions benefit from the Consortium in several ways including:

- Provision of opportunities to carry out collaborative work and engage in scholarly exchanges in African partner institutions.
- Building networks for future collaboration.
- Embracing CARTA's new and innovative model for research training in their institutions.
- Provision of opportunities for PhD fellows and early career researchers in the partner institutions to receive international global health experience.
- Provision of opportunities to engage in capacity-building initiatives in the African institutions.
- Provision of opportunities to promote local expertise and higher education programs, and extend the institution's international reach and reputation.

CURRENT FOCAL PERSONS

**Canadian Association for
Global Health (CAGH)**

Brown University, USA



Lubna Bhayani

Board Director

Email:

lubna.bhayani@gmail.com



Daniel Jordan Smith

Professor, Department of
Anthropology & Director,
Africa Initiative

Email:

daniel_j_smith@brown.edu

University of Warwick, UK



Bronwyn Harris

Associate Professor, Warwick
Applied Health and Centre for
Global Health, Warwick Medical
School

Email: B.Harris.2@warwick.ac.uk



Frances Griffiths

Professor, Warwick Applied
Health and Centre for Global
Health, Warwick Medical
School

Email:

f.e.griffiths@warwick.ac.uk

Umeå University, Sweden

University of Bergen, Norway



Anna-Karin Hurtig

Professor & Head of the
Department of Epidemiology
and Global Health

Email:

anna-karin.hurtig@umu.se



Thorkild Tylleskär

Professor, Centre for
International Health

Email:

thorkild.tylleskar@uib.no

University of Gothenburg, Sweden



Göran Bondjers

Professor, School of Public Health

Email: goran.bondjers@gu.se



Håkan Billig

Professor, Department of Physiology

Email: hakan.billig@gu.se

Swiss Tropical and Public Health Institute (Swiss TPH), Switzerland



Julia Bohlius

Head of Department for Education and Training

Email: julia.bohlius@swisstph.ch



Anja Matthiä

Coordinator, Teaching and Training

Email: anja.matthiae@swisstph.ch

ESE:O, Chile



Soledad Falabella

Director, ESE:O

Email: s.falabella@eseo.cl